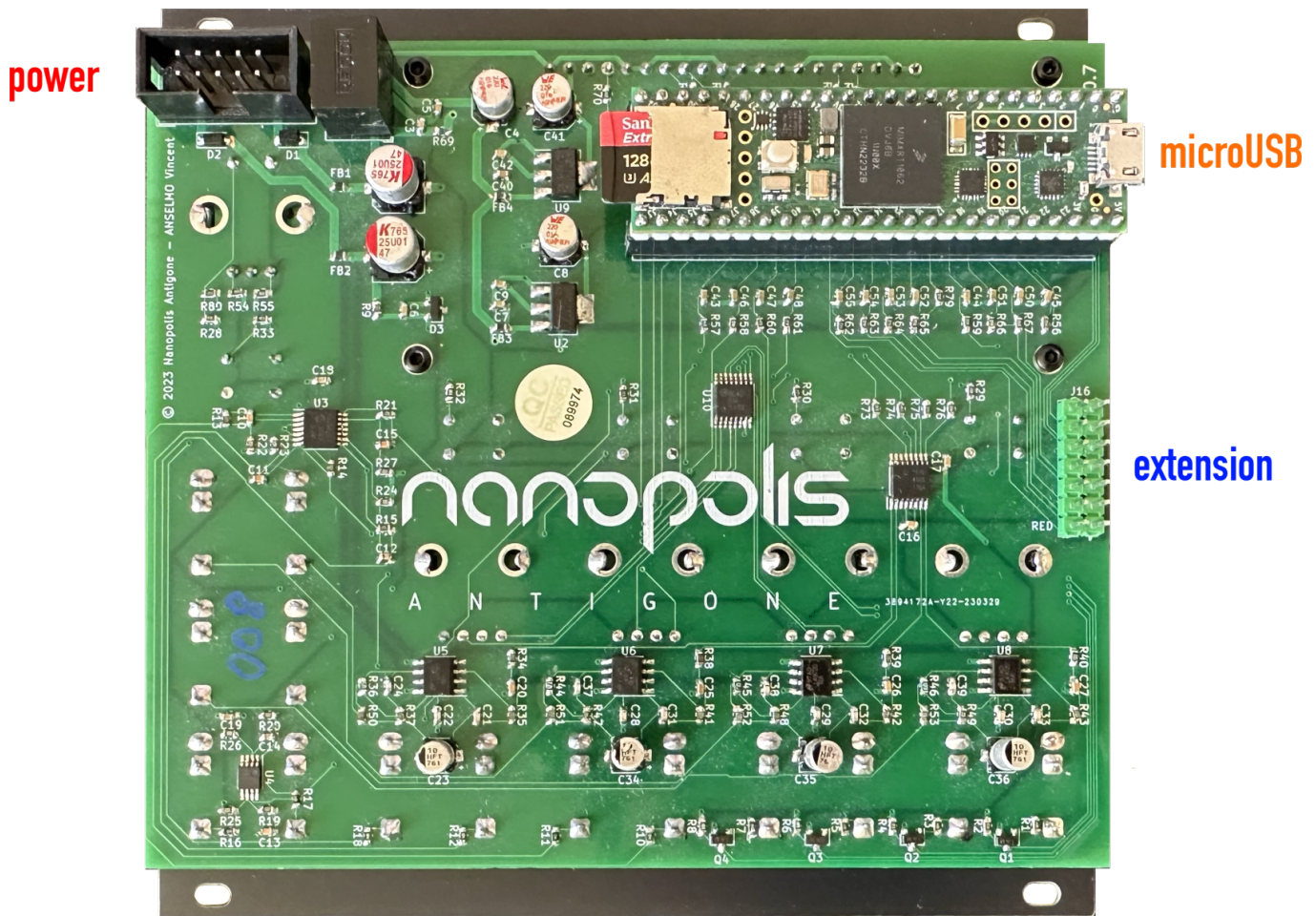


Back of the module & connectors

Representation of the back of the module



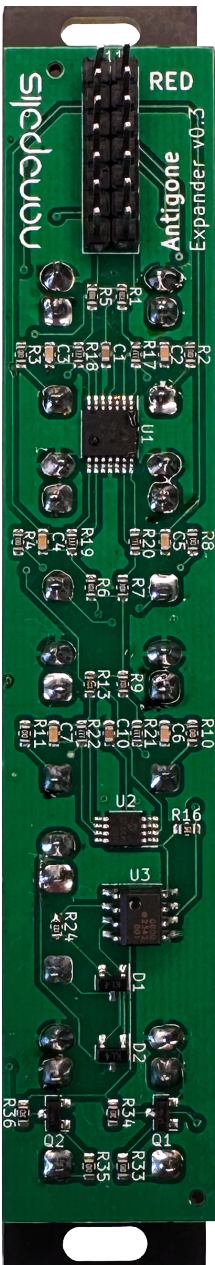
Power	Standard eurorack power -12V / GND / +12V , Red stripe of the ribbon is on the left
MicroUSB	Micro USB socket, to connect to a computer, used to update the firmware

Extension

Extension port, used to plug the CV/Gate & Midi extension

Warning ! The ribbon cable must be plugged in the right direction. There is a "RED" inscription on the PCB which indicates where the red stripe of the ribbon should be.

Representation of the back of the expander module



Warning ! The ribbon cable must be plugged in the right direction. There is a "RED" inscription on the PCB which indicates where the red stripe of the ribbon should be.

Revision #3

Created 3 June 2024 16:55:09 by Vincent

Updated 8 February 2025 16:59:47 by Vincent