

# Module's description

- Front panel
- Back of the module & connectors
- Screen navigation (todo)

# Front panel

## Front Panel Representation



### Buttons 1-4

Buttons 1 to 4 are contextual to the current screen.

**Short Click** : They allow you to switch tabs or pages on the current screen, or perform a specific action when a modal window is displayed.

**Long Click** : Opens the parameter modulation assignment located above on the screen.

<b>360° Rotary Potentiometers 1-4</b>	Potentiometers 1 to 4 are contextual to the parameters displayed on the screen. There are up to 4 parameters presented simultaneously on the screen, each potentiometer controls the parameter located above it on the screen.
<b>Digital Encoder</b>	<p>The encoder is contextual to the current screen. It allows you to navigate through menus, different instruments, or scroll through various wavetables or samples.</p> <p><b>Short Click:</b> Confirms a selection on the screen.</p>
<b>Exit / Alt Button</b>	<p><b>Short Click:</b> "EXIT" Button: Returns to the previous page.</p> <p><b>Long Click: "ALT" Button:</b> Accesses alternative functionalities, generally allows access to additional tabs in the modules.</p> <p><b>Long Click + Potentiometer 1-4:</b> Resets the parameter above the potentiometer to its default value.</p> <p><b>Short click + encoder click:</b> preview the current instrument; the note lasts as long as the encoder is held.</p> <p><b>Long click + turn encoder:</b> opens a shortcut menu.</p>
<b>Audio Outputs 1-4</b>	Audio outputs 1-4 are AC-Coupled, with a voltage range of -7.5V to 7.5V.
<b>CV Inputs A-F</b>	CV inputs A-F operate within a voltage range of -5V to 5V. These inputs can be used for pitch control (standard 1V/oct) or modulation. Assignments are made in the software.
<b>Gate Inputs 1-4</b>	Gate inputs 1-4 operate within a voltage range of 0 to 40V. The trigger threshold is approximately 0.7V.

## Front Panel Representation of the expander

nanopolis

# ANTIGONE

MIDI/CV Expander

G



H



I



J



K



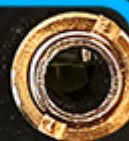
L



CV IN

MIDI

TRS A/B



5



6

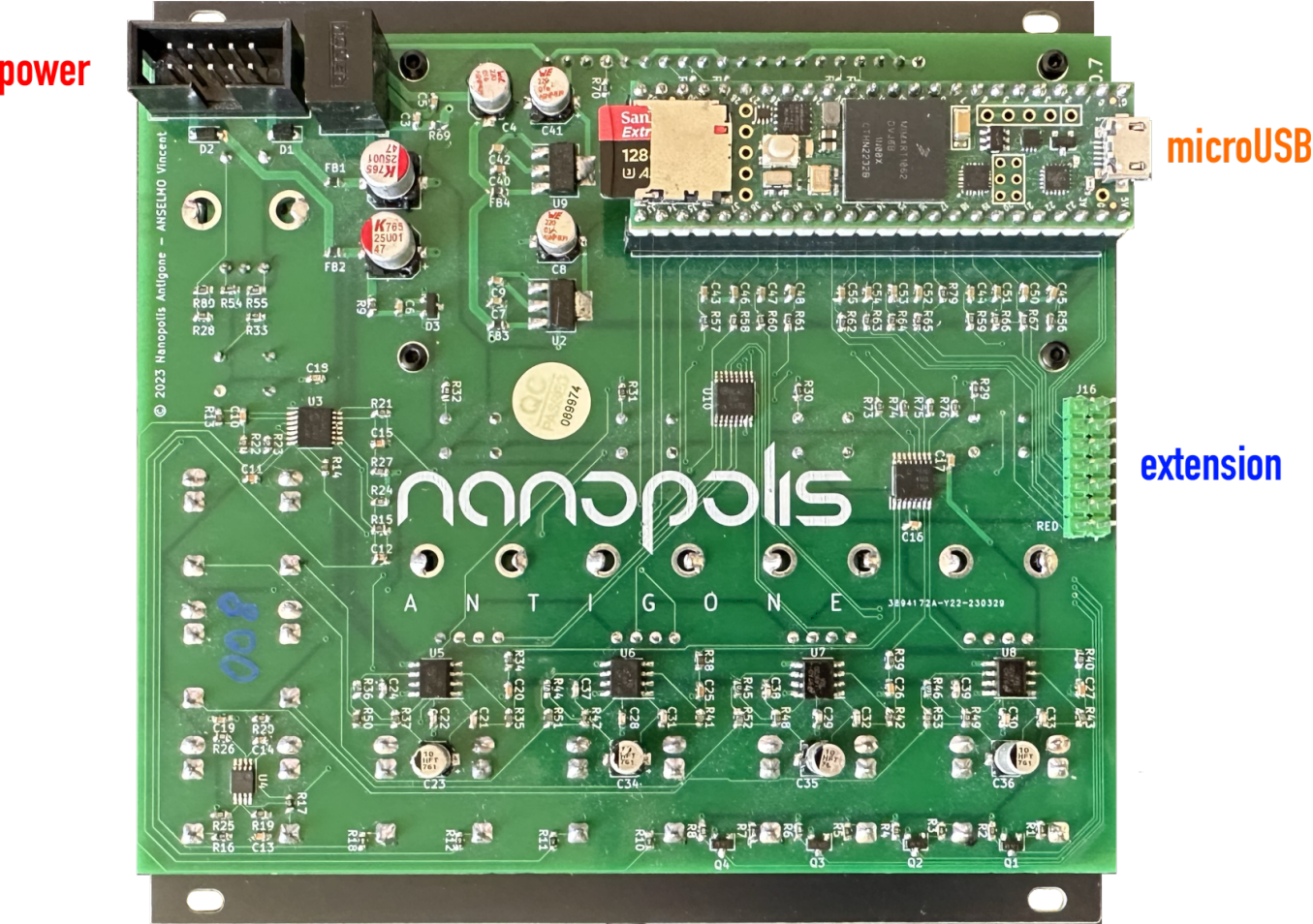


GATE

<b>Entrées CV G-L</b>	CV inputs G-L operate within a voltage range of -5V to 5V. These inputs can be used for pitch control (standard 1V/oct) or modulation. Assignments are made in the software.
<b>Entrées Gate 5-6</b>	Gate inputs 5-6 operate within a voltage range of 0 to 40V. The trigger threshold is approximately 0.7V.
<b>MIDI In</b>	Midi input is compatible with midi to jack 3.5 adapter (format TRS A or TRS B)

# Back of the module & connectors

Representation of the back of the module



Power	Standard eurorack power -12V / GND / +12V , Red stripe of the ribbon is on the left
MicroUSB	Micro USB socket, to connect to a computer, used to update the firmware

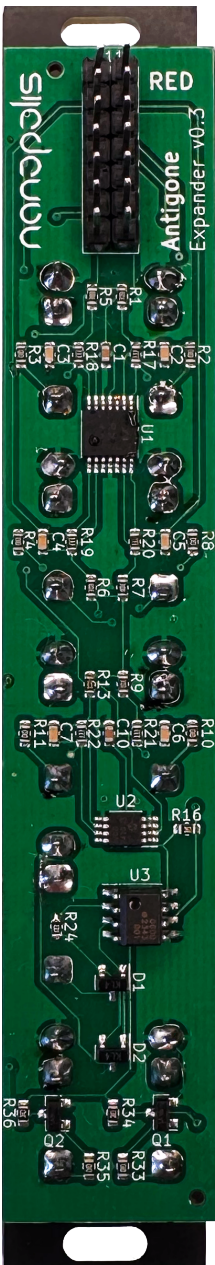


## Extension

Extension port, used to plug the CV/Gate & Midi extension

Warning ! The ribbon cable must be plugged in the right direction. There is a "RED" inscription on the PCB which indicates where the red stripe of the ribbon should be.

# Representation of the back of the expander module



Warning ! The ribbon cable must be plugged in the right direction. There is a "RED" inscription on the PCB which indicates where the red stripe of the ribbon should be.



# Screen navigation (todo)